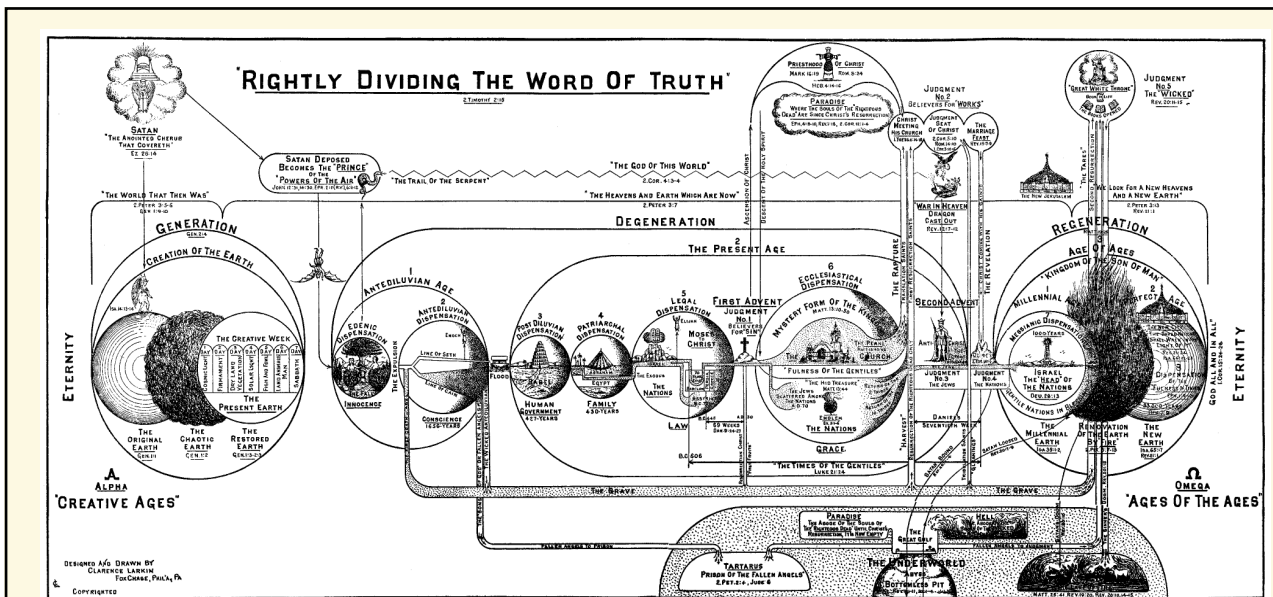


1

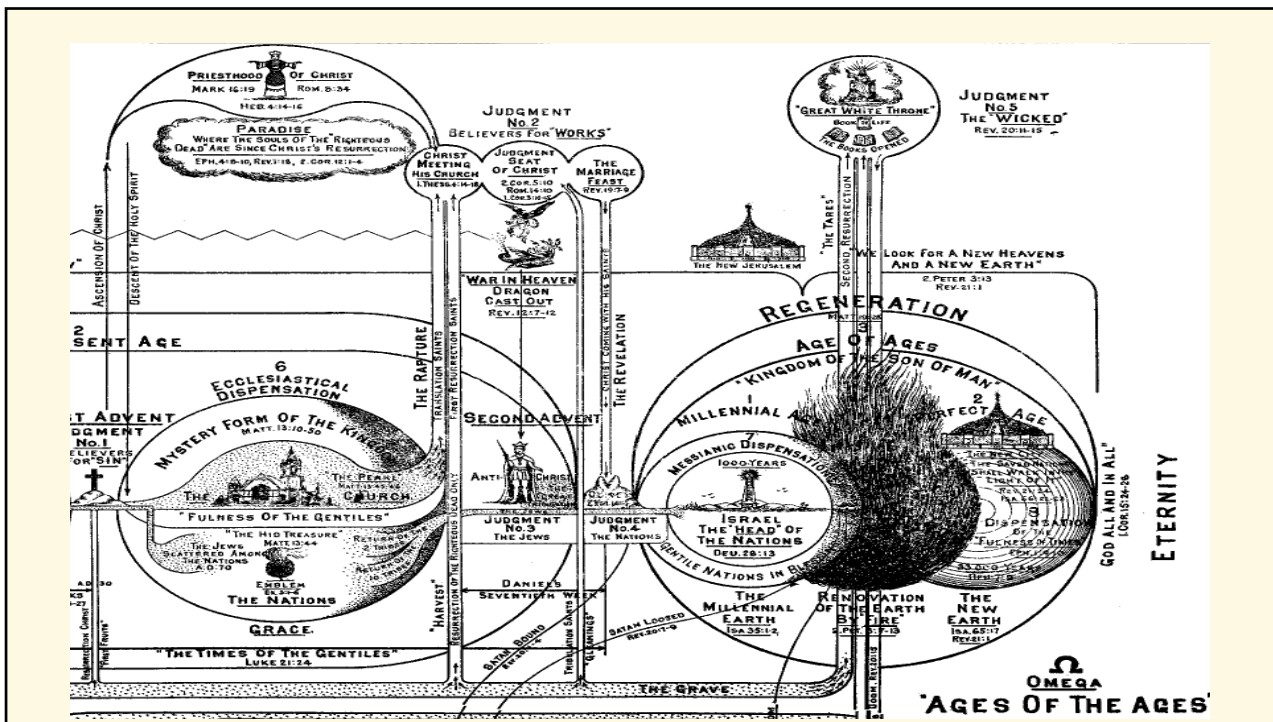


3



From *Dispensational Truth* by Clarence Larkin (1850-1924)  
 American Baptist pastor, Bible teacher and author  
 His intricate & influential charts provided readers with a visual strategy for mapping God's action & interpreting biblical prophecies.  
[Dispensational Truth \(preservedwords.com\)](http://dispensationaltruth.com)

4



5

# THE CLOSING EVENTS CHART

**The Christian "has a chart pointing out every waymark on the heavenward journey, and he ought not to grieve at anything." ec 598.1**

**THE TIME OF THE END**

### 1 THE COMMENCEMENT OF INVESTIGATIVE JUDGMENT

"UNTIL TWO THOUSAND DAYS THEN SHALL THE SANCTUARY BE CLEANSED."

1844

### 2 THE NATIONAL SUNDAY LAW

"THE IMAGE OF THE BEAST OF THE EAST"

### 3 THE CLOSE OF PROBATION

"AND AT THAT TIME SHALL MICHAEL STAND UP" DAN. 12:1

### 4 THE SECOND COMING OF CHRIST

"THE HOPE OF THE CLIMAX OF THE AGE"

**THE GREAT ADVENT MOVEMENT IN BIBLE PROPHECY**

1 THE INVESTIGATIVE JUDGMENT Dan. 8:13, 14 Dan. 7:20, 23, 24, 25, 26, 27

2 THE GREAT ANTI-TYPICAL DAY OF ATONEMENT Lev. 23:26-34, S.S. 10 97 879; Rev. 20:1, 20:2

3 THE SANCTUARY CLEANSED, RESTORED, JUSTIFIED, VINDICATED

4 THE THREE ANGEL'S MESSAGES Rev. 14:6-12 THE LOUD CRY Rev. 18:1-4

5 THE MYSTERY OF GOD IS FINISHED Rev. 17:1-17 "CHRIST IN YOU" Col. 2:27

6 SATAN IS COMPLETELY UNMASKED, DEFEATED, CONDEMNED

7 GOD IS JUDGED AND IS COMPLETELY VINDICATED - JUSTIFIED

**FOCAL POINT OF THE AGES**

**THE NATIONAL SUNDAY LAW**

1888 1961 TODAY

THE FIRST PHASE  
THE SECOND PHASE  
THE THIRD PHASE  
THE FOURTH PHASE

**THE SEVEN LAST PLAGUES**

1 THE WRATH OF GOD

2

3

4

5

6

7

**NOTES**

1 DOES GOD HAVE A SPECIAL WARNING REGARDING THE SEVENTH DAY?

2 THE THIRD ANGEL'S MESSAGE Rev. 14:1-11, 14:2-12, 14:9-12

3 THE SEVENTH DAY

4 THE SEVENTH DAY

5 THE SEVENTH DAY

6 THE SEVENTH DAY

**NOTES**

11 THE DELAY

12 THE DELAY

13 THE DELAY

14 THE DELAY

15 THE DELAY

16 THE DELAY

17 THE DELAY

18 THE DELAY

19 THE DELAY

20 THE DELAY

21 THE DELAY

Adapted from Ellen G. White Founder of Seventh Day Adventist Church

6

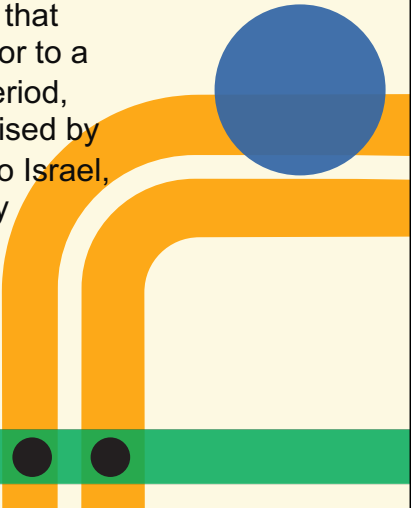
# Pre-Millennium

7

↶
●

## Pre-Millennialism

- **Premillennial** – Pre-millennialism is a theological viewpoint within Christian eschatology (the study of end times) that holds that the Second Coming of Christ will occur prior to a literal thousand-year reign of Christ on Earth. This period, known as the millennium, is believed to be characterised by peace, justice, and the fulfilment of God's promises to Israel, as described in various biblical passages, particularly Revelation 20:1-6.



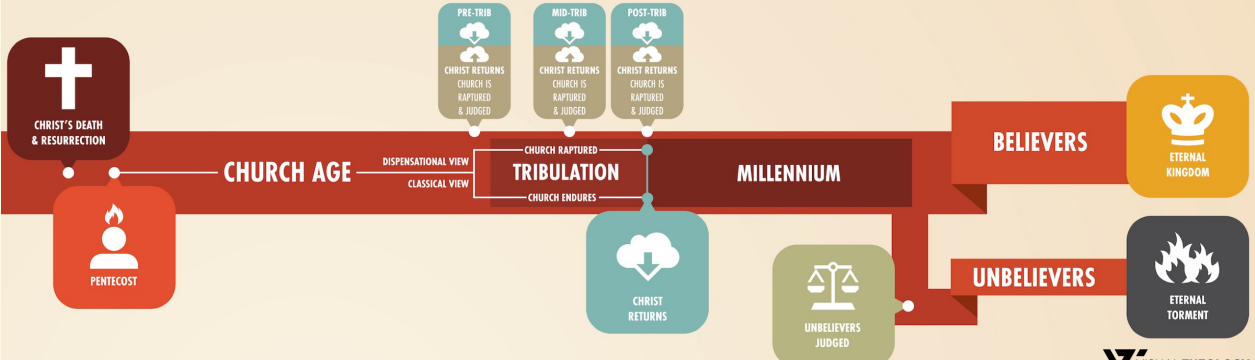
8

## PREMILLENNIALISM

Premillennialism is the belief that the Second Coming of Christ occurs before the millennium, which is a literal 1000 years.

Premillennialists believe that believers will be caught up (raptured) into heaven at the end of the church age before a time of great tribulation on the earth. They will then return with Christ to rule with Him for a 1000 years after which unbelievers are judged and the eternal kingdom is set up.

Premillennial theologians have historically been divided on whether the church will go through a time of great tribulation or whether the church will be raptured from the earth before the tribulation. Dispensationalists have also differ on the time of the rapture believing it to occur, before, in the middle, or at the end of the period of tribulation.



The diagram illustrates the sequence of events in Premillennialism:

- CHRIST'S DEATH & RESURRECTION** (marked with a cross icon)
- PENTECOST** (marked with a flame icon)
- CHURCH AGE**: The period between Pentecost and the rapture. It is divided into:
  - DISPENSATIONAL VIEW**: Church is raptured before the tribulation.
  - CLASSICAL VIEW**: Church endures through the tribulation.
- TRIBULATION**: A period of great tribulation. Three rapture scenarios are shown:
  - PRE-TRIB**: Christ returns, church is raptured, and judged before tribulation.
  - MID-TRIB**: Christ returns, church is raptured, and judged during tribulation.
  - POST-TRIB**: Christ returns, church is raptured, and judged after tribulation.
- MILLENNIUM**: A 1000-year reign of Christ on Earth.
- BELIEVERS**: Those who were raptured, leading to the **ETERNAL KINGDOM** (marked with a crown icon).
- UNBELIEVERS**: Those who remained on Earth, leading to **ETERNAL TORMENT** (marked with a flame icon).
- CHRIST RETURNS** (marked with a cloud and arrow icon) and **UNBELIEVERS JUDGED** (marked with a scales icon) are also indicated.

Adapted from "End Time Views" VISUAL THEOLOGY

9



## Pre-Millennialism

- **Historical Premillennial** – Christian will remain on the earth during the great tribulation. The tribulation will purify the churches by rooting out false believers. The current age will continue until the Second Coming of Christ, after which the millennium will commence. The millennium will be a one-thousand year reign of Jesus on earth. Historic pre-millennialists try to balance symbolic and literal interpretations of biblical prophecy.

10



## Pre-Millennialism

- **Historical Premillennial**
  - The revealing of the Antichrist precedes Christ's return (2 Thes 2:3-4)
  - The tribulation will root out false members from the churches (Rev 2:22-23)
  - The saints are on earth during the tribulation (Rev 13:7)
  - God's promises to Abram and his offspring were conditional (Gen 22:18; 2 Chr 33:7-8; Isa 1:19-20; Jer 7:6-7)
  - The NT frequently uses "Israel" and the "Twelve Tribes" to refer to Christians (Matt 19:28-29; Rom 9:6-8)

11



## Pre-Millennialism

- **Dispensational Premillennial** – This perspective emphasises a sharp distinction between God's plan for Israel and the church. Dispensational pre-millennialists believe in a secret rapture of the church before a period of tribulation, followed by the visible return of Christ to establish His earthly kingdom. The millennium will be a future, physical one-thousand year reign of Jesus on the earth, following a time known as “the great tribulation.” Jesus will return to rapture Christians from the earth before God pours out his wrath on the earth.

12



## Pre-Millennialism

- **Dispensational Premillennial**
  - God will remove Christians before the outpouring of His wrath during the tribulation (1 Thess 5:9; Re 3:10)
  - God's promises to Abraham and his offspring were unconditional (Gen 15:7-21)
  - The church is not specifically mentioned between Revelation 4 and 19

13





## Pre-Millennialism

### Pros and Cons of Historic Pre-millennialism

#### Pros:

- It maintains a straightforward reading of biblical prophecy, particularly in the book of Revelation. It emphasises the importance of Christ's literal reign on Earth.

#### Cons:

- Critics argue that historic pre-millennialism may overlook the symbolic nature of some apocalyptic passages, leading to overly literal interpretations. Additionally, it may struggle to reconcile certain prophecies with historical events.

14



## Pre-Millennialism

### Pros and Cons of Dispensational Pre-millennialism

#### Pros

- Dispensationalism offers a systematic framework for understanding biblical history and prophecy, distinguishing between God's purposes for Israel and the church. It provides a clear and distinct timeline for end-time events.

#### Cons

- Critics of dispensational pre-millennialism point out that its reliance on a secret rapture and a sharp division between Israel and the church is not universally supported by scripture. Some argue that dispensationalism can lead to a fragmented view of the Bible's message.

15

⬅ ●

## The Rapture

- **Rapture**
  - The term "rapture" in Christian eschatology refers to an event where believers, both living and dead, are believed to be taken up into heaven, escaping the tribulations and judgments associated with the end times. The word "rapture" is derived from the Latin translation of 1 Thessalonians 4:17. English translations translate the key word in that verse with "caught up" or "snatched up."

16

⬅ ●

## The Rapture

PRE-TRIB

CHRIST RETURNS  
CHURCH IS  
RAPTURED  
& JUDGED

MID-TRIB

CHRIST RETURNS  
CHURCH IS  
RAPTURED  
& JUDGED

POST-TRIB

CHRIST RETURNS  
CHURCH IS  
RAPTURED  
& JUDGED

DISPENSATIONAL VIEW

CLASSICAL VIEW

CHURCH RAPTURED

TRIBULATION

MILLENNIUM

CHURCH ENDURES

CHRIST  
RETURNS

UNBELIEVERS  
JUDGED

17





## The Rapture

### ○ Pre-Tribulation Rapture

- **View:** The Church will be raptured before a seven-year tribulation period.
- **Key Passages:** 1 Thessalonians 4:16-17 and Revelation 3:10.
- **Major Proponents:** John Nelson Darby, C.I. Scofield, Tim LaHaye, Hal Lindsey.
- **Pros:**
  - Provides comfort by suggesting believers will be spared from the most intense tribulation.
  - Aligns with a literal interpretation of certain biblical texts.
- **Cons:**
  - Critics argue that the term "rapture" itself is not explicitly found in the Bible.
  - Some find the pre-tribulation view to be a relatively recent theological development.

18



## The Rapture

### ○ Mid-Tribulation Rapture

- **View:** The Church will be raptured at the mid-point of the tribulation.
- **Key Passages:** Matthew 24:15-31, Revelation 11:15-19.
- **Major Proponents:** G.H. Pember, J. Barton Payne.
- **Pros:**
  - Associates the rapture with a specific point in the tribulation narrative.
- **Cons:**
  - Requires a more selective interpretation of certain biblical texts.
  - Not as widely accepted as other views.

19



## The Rapture

### ○ Post-Tribulation Rapture

- **View:** The Church will go through the tribulation period and be raptured at the end mid-point of the tribulation.
- **Key Passages:** Matthew 24:29-31, 1 Thessalonians 4:17-18.
- **Major Proponents:** George E. Ladd, Robert H. Gundry
- **Pros:**
  - Emphasizes the unity of believers enduring tribulation.
  - Grounded in a historical perspective on biblical prophecy.
- **Cons:**
  - Raises questions about the purpose of the tribulation if believers are not spared its intensity.
  - May be seen as less comforting for believers facing difficult times.

20

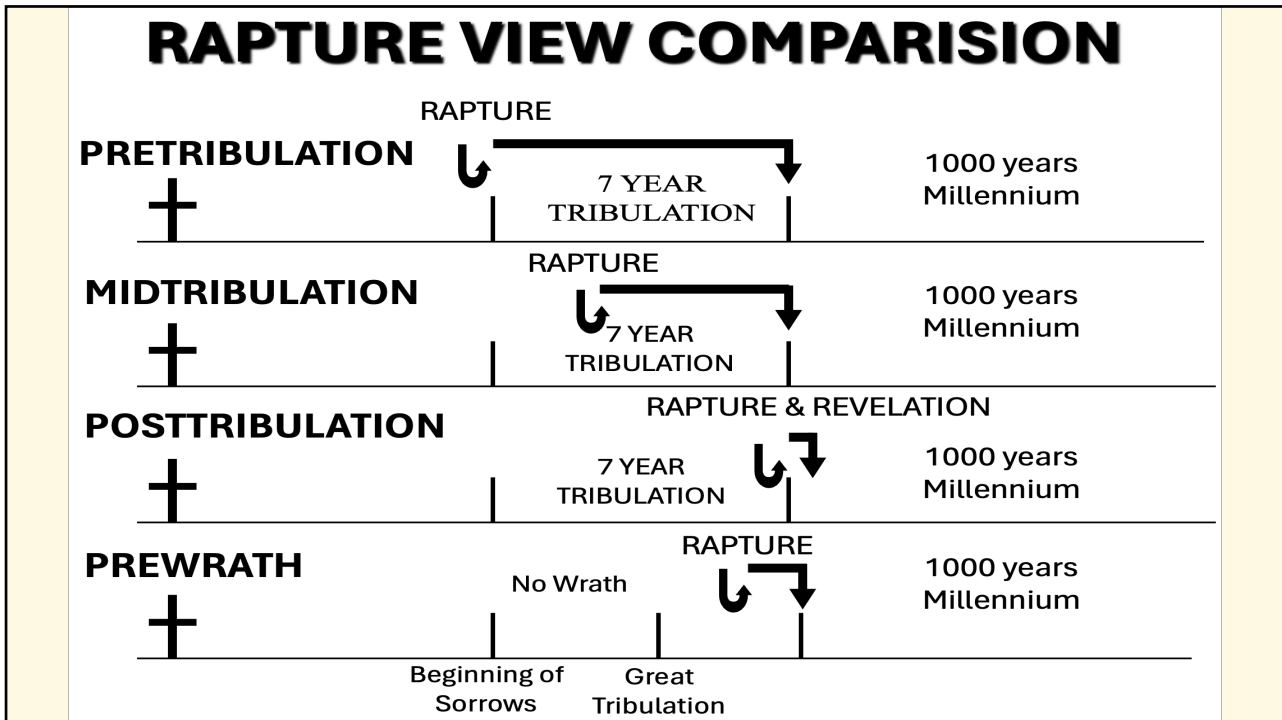


## The Rapture

### ○ Pre-Wrath Rapture

- **View:** The rapture will occur before the "wrath" of God is poured out, typically in the latter part of the tribulation
- **Key Passages:** Revelations 6:16-17, 1 Thessalonians 5:9
- **Major Proponents:** Marvin Rosenthal, Robert Van Kampen.
- **Pros:**
  - Aligns the timing of the rapture with specific events in the tribulation narrative.
  - Attempts to address the concerns of both pre-tribulation and post-tribulation perspectives.
- **Cons:**
  - The timing of the "wrath" period can be subjective, leading to varying interpretations.
  - Not as widely embraced as other views.

21



22

⬅
●

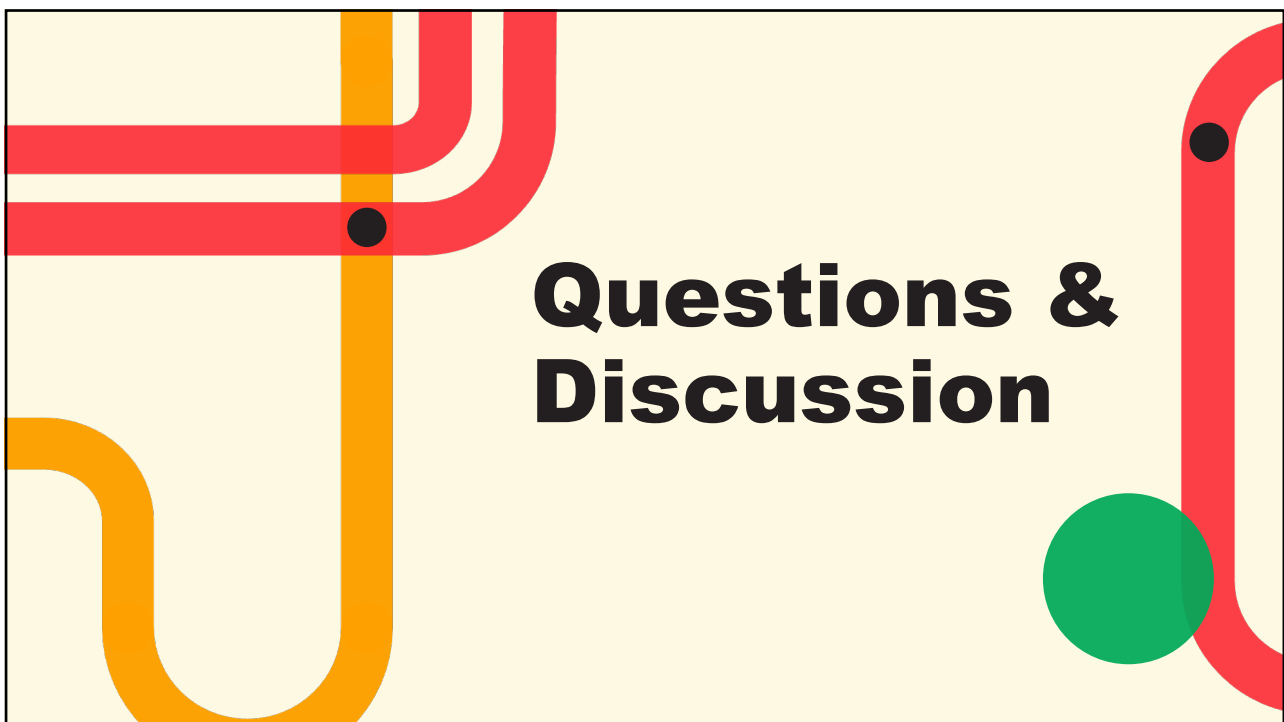
## The Tribulation

- **Definition:**
  - The tribulation refers to a period of intense suffering and distress that precedes the second coming of Christ. This perspective is rooted in a literal interpretation of biblical prophecies, particularly those found in the books of Daniel and Revelation.
- **Key Passages:**
  - Daniel 9:27: This verse speaks of a covenant being confirmed for seven years, which is often interpreted as the beginning of the tribulation period.
  - Matthew 24:21: Jesus describes a time of great tribulation, indicating a period of unparalleled distress.
  - Revelation 7:14: Describes a multitude of people who have come out of the great tribulation, emphasizing the distinctiveness of this period.

23

Aspect	Pre-Tribulation Rapture	Mid-Tribulation Rapture	Post-Tribulation Rapture	Pre-Wrath Rapture
<b>Timing of Rapture</b>	Before the Tribulation begins.	Midpoint of the Tribulation period.	After the Tribulation ends.	Before the wrath of God is poured out.
<b>Key Scriptures</b>	1 Thessalonians 4:16-17, Revelation 3:10	Revelation 11:15-19, 1 Corinthians 15:52	Matthew 24:29-31, 1 Thessalonians 5:9	Revelation 6:12-17, 7:14
<b>Believers' Experience</b>	Believers are taken to meet Christ in the air, spared from tribulation.	Believers are raptured before the Great Tribulation.	Believers experience persecution but are raptured before God's final wrath.	Believers are raptured before God's wrath but may experience some tribulation.
<b>Nature of Tribulation</b>	Believers are spared from the entire period of tribulation.	Believers experience the first half of the Tribulation, marked by lesser judgments.	Believers experience the full period of tribulation but are protected from God's final wrath.	Believers experience persecution and tribulation but not God's wrath.
<b>Key Events</b>	Rapture, Marriage Supper of the Lamb, Great Tribulation begins.	Rapture, Marriage Supper of the Lamb, Great Tribulation continues.	Great Tribulation ends, Second Coming of Christ, Millennial Kingdom begins.	Rapture, Wrath of God poured out, Second Coming of Christ.



24



25



26

		<h2>Embracing Christ's Imminent Return</h2>
---	---	---

- **Sense of Urgency:** Premillennialists emphasis on the imminent return of Christ provides a sense of urgency encouraging believers to prioritise their spiritual lives, evangelism, and acts of service.
  - Tit 2:11-13
  - Matt 24:36-44
  - Matt 25:1-13
- **Focus on Evangelism and Discipleship:** Since premillennialism underscores the importance of spreading the Gospel before Christ's return, adherents are typically committed to evangelism and discipleship.
  - Matt 28:18-20

27



## Embracing Christ's Imminent Return

- **Engagement with Current Events:** Premillennialists interpret current events through the lens of biblical prophecy, especially those related to the end times. This leads to heightened awareness of global affairs and a desire to understand how these events align with biblical prophecy.
  - Matt 24:3-8
  - Luke 21:25-28
- **Perseverance in Trials:** Belief in the imminent return of Christ provides comfort and hope during times of adversity. Premillennialists understand that difficulties and persecution are part of the end times scenario, but they also trust in God's ultimate victory and the promise of Christ's return.
  - John 16:29-33
  - Rev 2:8-11

28



## Understanding the Times

29